

CFF 6-PEG BUMPER PLATE TREE

Assembly & Care Instructions



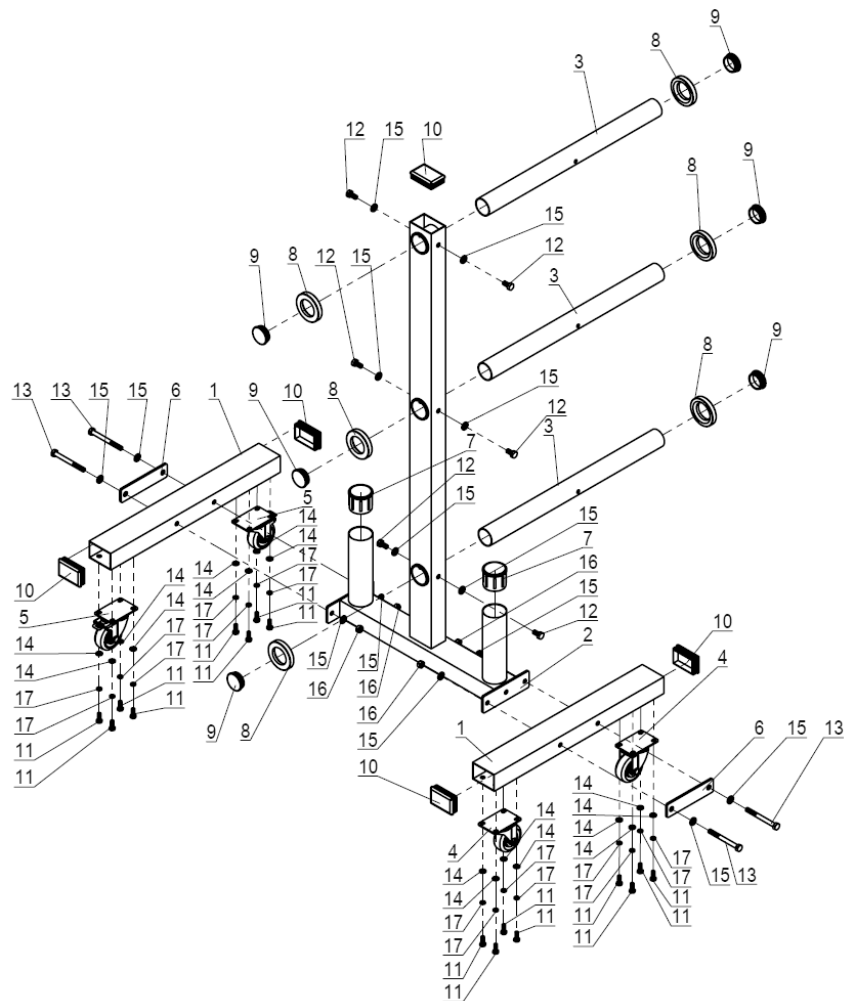
THANK YOU!

Thanks for letting us help with your equipment organization needs. The 6-peg bumper plate tree is a great way to get your plates neat and tidy. Please review these instructions to ensure your plate tree is correctly assembled and lasts.

INCLUDED IN THIS DOCUMENT

- exploded drawing & parts list
- assembly steps
- caring for your plate tree

EXPLODED DRAWING & PARTS LIST

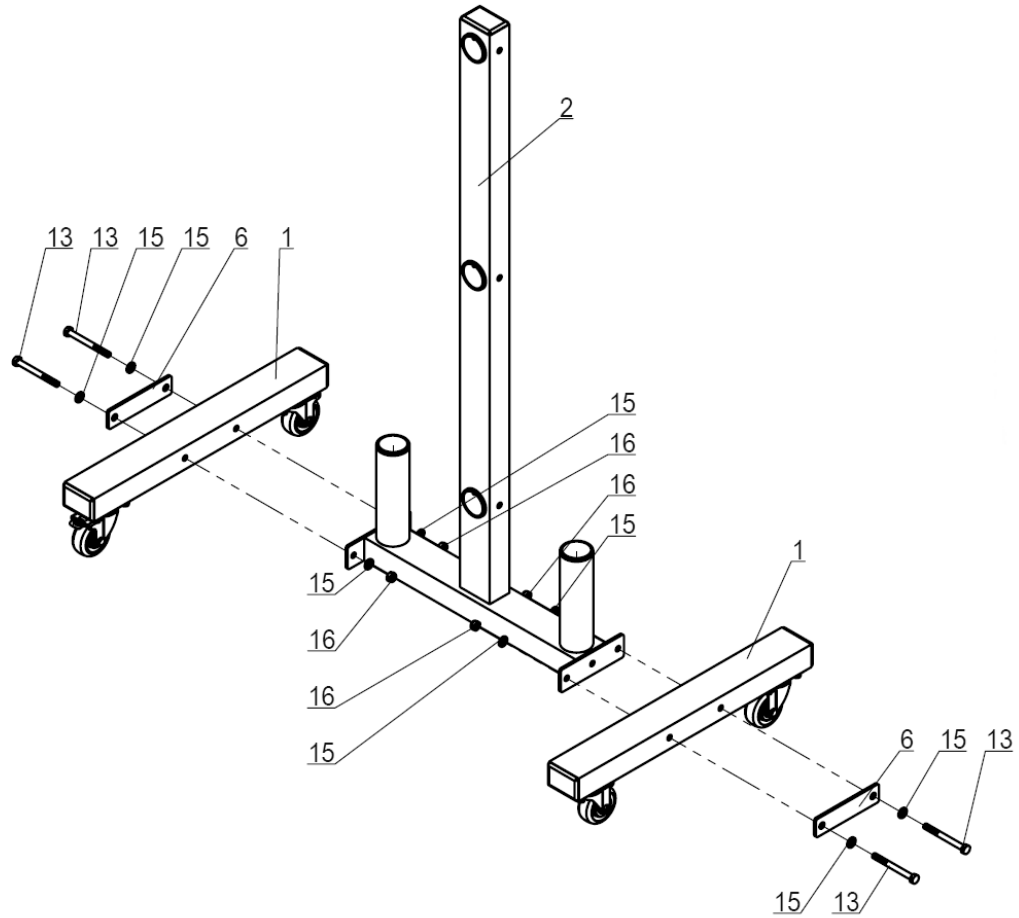


| No. | Description | Qty |
|-----|------------------------------|-----|
| 1 | Base Frame | 2 |
| 2 | Main Frame | 1 |
| 3 | Plate Holder Ø48x2x600mm | 3 |
| 4 | Wheel Ø75x98mm | 2 |
| 5 | Wheel w/ Brake Ø75x98mm | 2 |
| 6 | Metal Plate 40x160x5mm | 2 |
| 7 | Sleeve Ø60x1.5mm | 2 |
| 8 | Rubber Bumper Ø77xØ47.5x13mm | 6 |
| 9 | End Cap Ø48x2mm | 6 |
| 10 | End Cap, Square 50x75x2mm | 5 |
| 11 | Bolt M8x15mm | 16 |
| 12 | Bolt M10x20mm | 6 |
| 13 | Bolt M10x100mm | 4 |
| 14 | Washer M8 | 16 |
| 15 | Washer M10 | 14 |
| 16 | Nut M10 | 4 |
| 17 | Spring Washer M8 | 16 |

ASSEMBLY STEPS

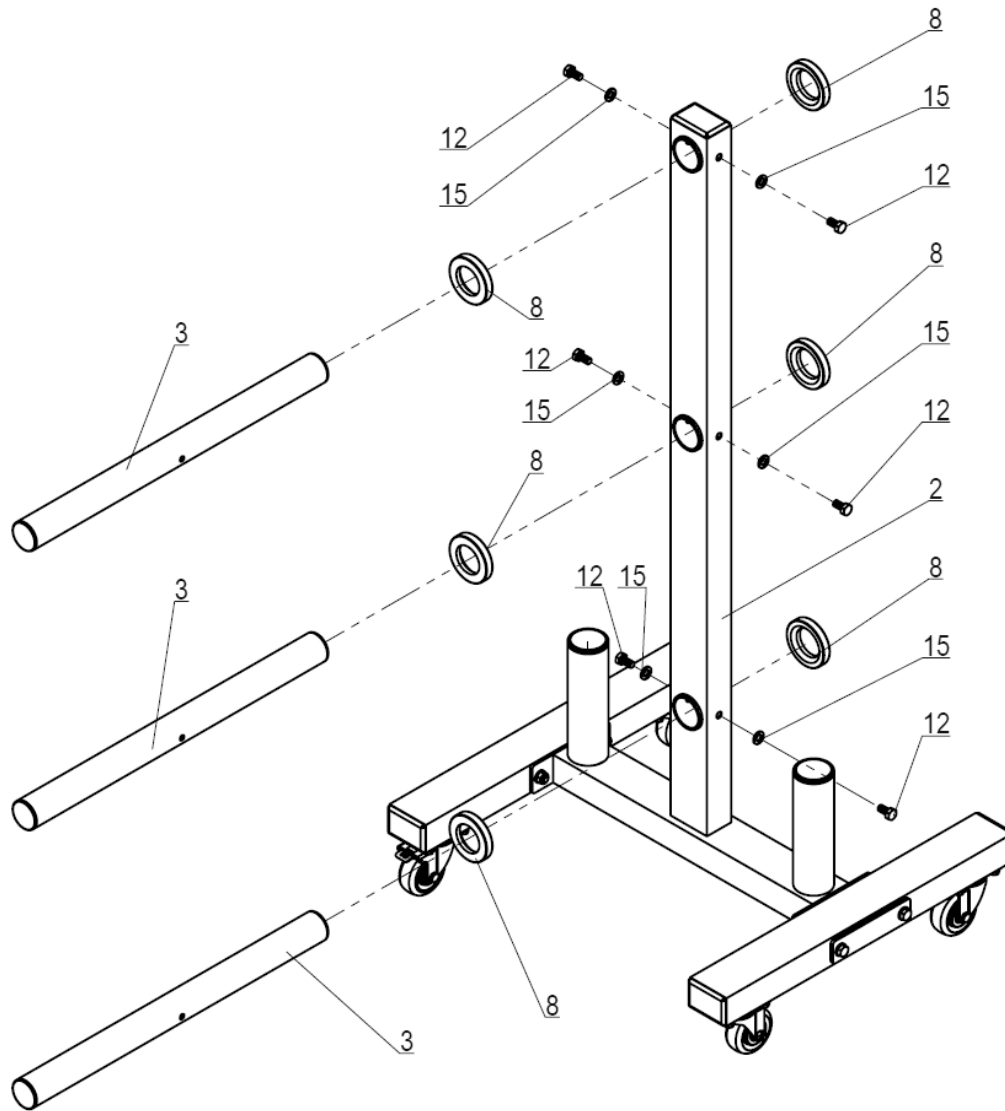
STEP 1

Assemble base frame [1], main frame [2], and metal plate [6] using M10x100mm bolts, washers, and nuts [13, 15, 16]. Tighten all the bolts.



STEP 2

Insert plate holders [3] into main frame [2], then slide rubber bumpers [8] on as shown below. Secure plate holders to main frame using M10x20mm bolts and washers [12, 15].



CARING FOR YOUR PLATE TREE

MAKE YOUR INVESTMENT LAST

Loading

Balanced loads are happy loads. Keep the heaviest plates evenly loaded on the lowest arms of the tree, working your way up with progressively lighter plates. Your new plate tree is designed to be stable, but that doesn't mean it can't be tipped over with improper loading. (The picture above was taken purely to illustrate how the rack works. We never leave it that way.)

Cleaning

Periodically wipe down your plate tree with a clean, dry towel. If deeper cleaning is required, a damp towel and mild detergent should suffice. Avoid harsh chemical cleaning products, as they may damage the finish.

Re-tightening hardware

Periodically inspect the tree for signs of wear or loosening hardware. Make sure all nuts & bolts are tight. This unit is designed to support a good amount of weight and deliver reliable service over many years, but it will only do so when properly assembled and maintained.

CONTACT CFF WITH ANY QUESTIONS

WE WANT YOU HAPPY!

phone: (717) 207-7171

email: sales@cffit.com

We're here if you need us. (And we appreciate your feedback!)

WARNINGS & WAIVERS

YOU KNOW WE KINDA HAVE TO

Be smart. Be safe.

Before beginning any new exercise/conditioning program you should consult your physician, physical therapist, athletic trainer or strength and conditioning coach. If you have musculoskeletal problems it is extremely important to check with an orthopedist to make sure the program will not aggravate those problems. All products sold and/or promoted by Christian's Fitness Factory, Inc. should only be used with instruction from a physician, physical therapist, athletic trainer or coach. Minors should only use products sold and/or promoted by Christian's Fitness Factory, Inc. under the direct supervision of a qualified adult.

Disclaimer

No information found on the Christian's Fitness Factory, Inc. website or within product manuals should be construed or followed as an exercise or conditioning program or as instruction for use for any item promoted and/or sold by Christian's Fitness Factory, Inc. This manual and its contents are provided for general reference only and are not, and should not be relied on as, a substitute for the advice of a coach, fitness professional, physical therapist, or physician.

Products manufactured and/or sold by Christian's Fitness Factory, Inc. are not toys and should only be used under the direction, and in the presence, of a knowledgeable adult. There is a potential for serious injury if safety standards are not adhered to and instructions are not followed.

The exercise area must be safe and free of hazards. Christian's Fitness Factory, Inc. products should not be used in an area that does not provide ample space between the user and any obstacle or bystander. Improper use may result in severe injury to the user or bystanders.

The user should be aware of manufacturer's instructions, warnings, and maintenance procedures for each accessory before use. Any questions should be directed to the manufacturer before use. Before use, users shall determine the suitability of the product for their intended use, and users assume all risk and liability whatsoever in connection therewith.

Use of any information provided in this manual or equipment sold by christiansfitnessfactory.com is solely at your own risk. By using this equipment, you hereby agree to indemnify, save and hold harmless Christian's Fitness Factory, Inc. its employees, Agents, officers, and directors from any loss, liability, damage, injury or expense that may be incurred by you or any other person or entity due to your use of any information contained in this manual or equipment obtained from christiansfitnessfactory.com or otherwise arising from your actions, whether or not caused by the action, inaction or negligence of Christian's Fitness Factory, Inc.